



Accessing Google Drive Content

eLearning 2015-2016



eLearning 2015-2016

Teachers will have
assignments posted
by 9:00 AM.



Google Drive
Grades K-4

eLearning 2015-2016

Accessing Google Drive Content

You will need an Internet Connection to access your child's eLearning assignments. If you are unsure of how to connect an iPad to the Internet, see the iPad Wifi Connection help guide.

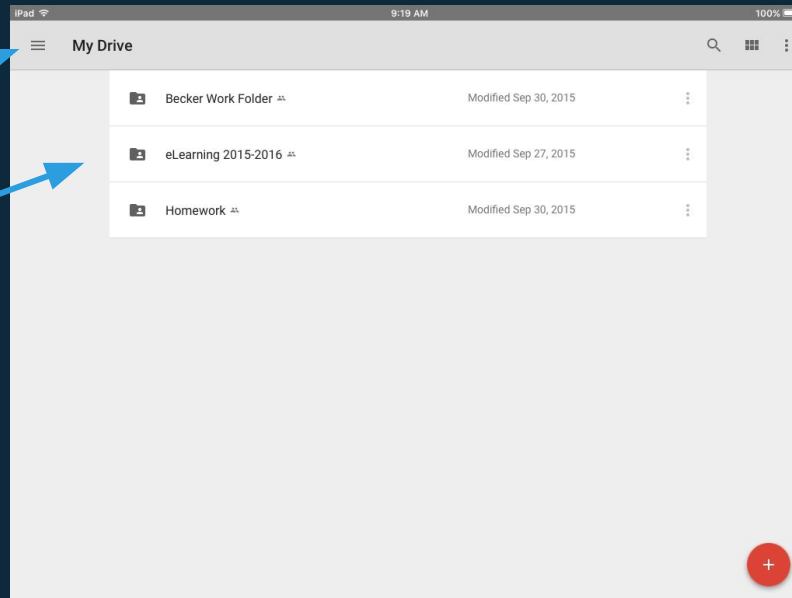


eLearning 2015-2016

Accessing Google Drive Content

Once you are connected to the Internet, open the Google Drive app. Look for the eLearning Folder in My Drive.

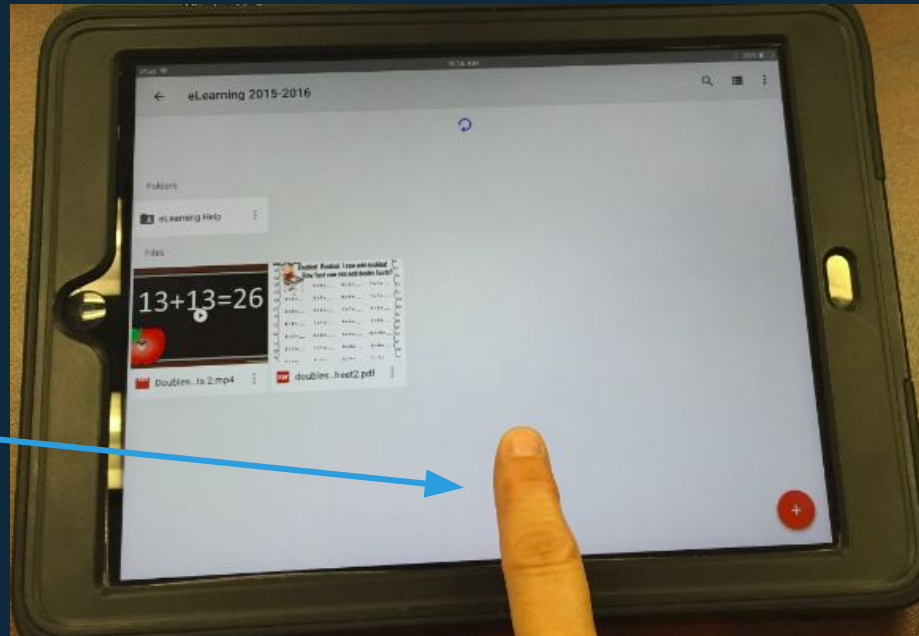
Menu
eLearning
Folder



eLearning 2015-2016

Accessing Google Drive Content

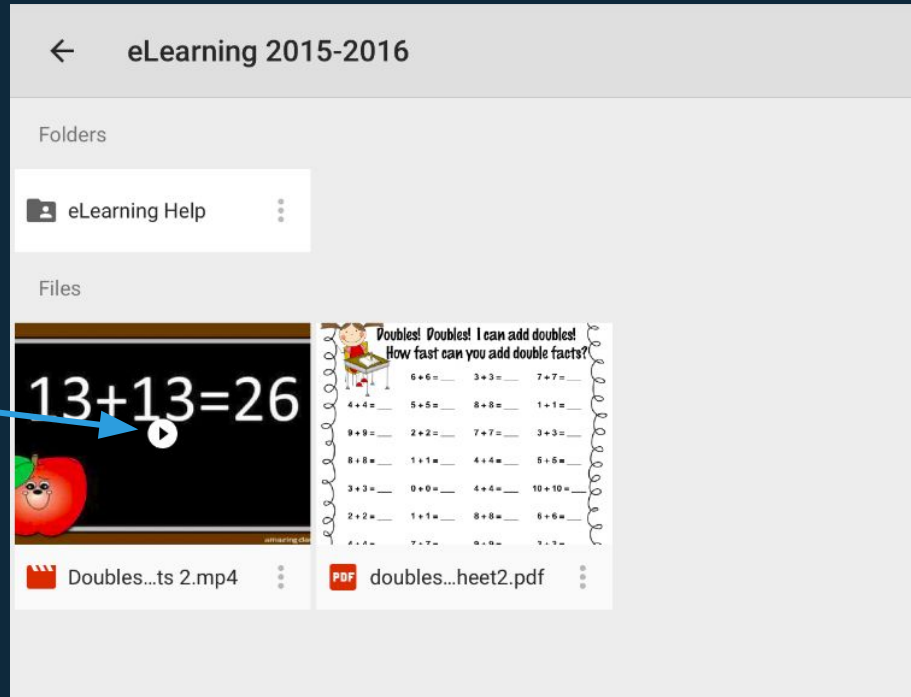
After opening the eLearning folder, pull down the screen to refresh. This will load the new eLearning content.



eLearning 2015-2016

Accessing Google Drive Content

Videos can be played right in Google Drive by tapping the Play button.



The screenshot shows a Google Drive interface for a folder named "eLearning 2015-2016". Under the "Files" section, there are two items:

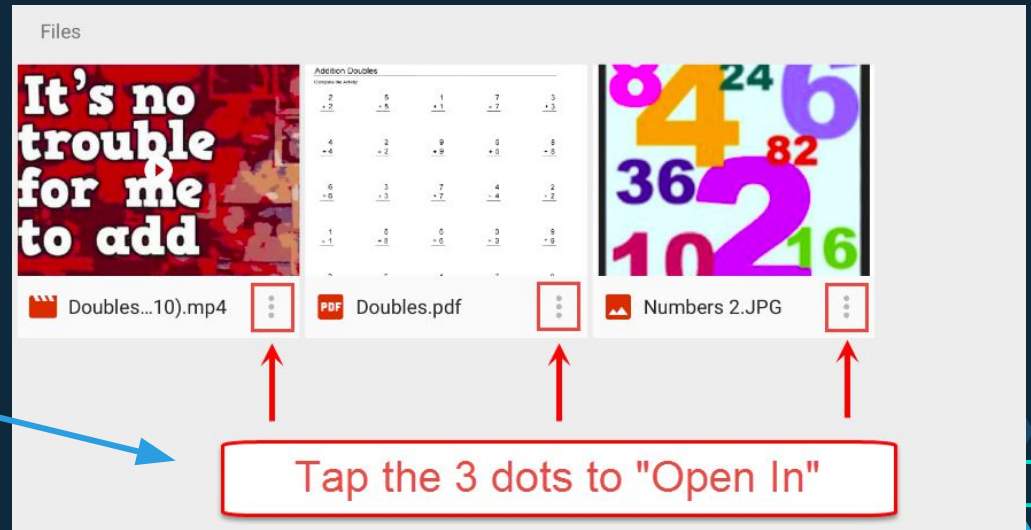
- A video file named "Doubles...ts 2.mp4" with a play button icon overlaid on its thumbnail. The thumbnail shows the equation $13+13=26$ and a cartoon apple character. A blue arrow points from the text on the left to this play button.
- A PDF file named "doubles...heet2.pdf" with a PDF icon. The thumbnail shows a worksheet titled "Doubles! Doubles! I can add doubles! How fast can you add double facts?" with various addition problems like $6+6=$, $3+3=$, $7+7=$, etc.



eLearning 2015-2016

Accessing Google Drive Content

If the teacher directions say to open a document in another app, tap the 3 dots to "Open In" another app.



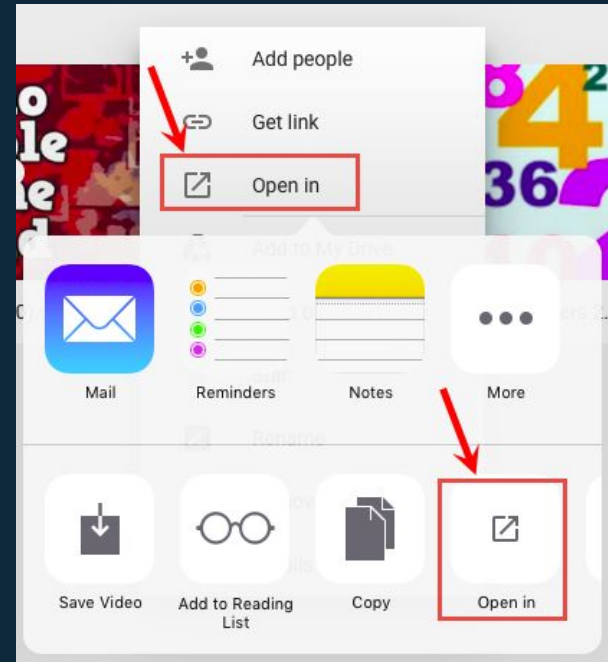
The screenshot shows a Google Drive interface with three files: a video, a PDF, and a JPEG. Each file has a three-dot menu icon to its right, which is highlighted with a red box. Red arrows point from these boxes to a red-bordered text box at the bottom that says "Tap the 3 dots to 'Open In'". A blue arrow from the text on the left points to the first three-dot menu icon.

Addition Doubles				
2	5	1	7	3
-2	-5	-1	-7	-3
4	2	9	5	8
-4	-2	-9	-5	-8
6	3	7	4	2
-6	-3	-7	-4	-2
1	0	0	3	8
-1	-0	-0	-3	-8

eLearning 2015-2016

Accessing Google Drive Content

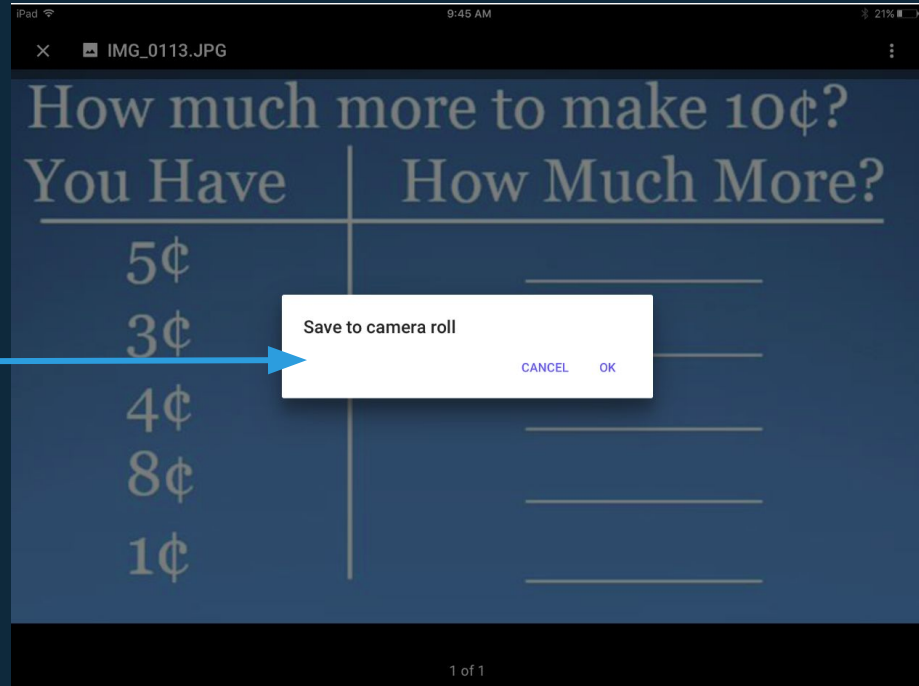
After tapping the 3 dots, choose “Open In” two times to open the document in another app.



eLearning 2015-2016

Accessing Google Drive Content

If the teacher directions say to save a picture to the Camera Roll, tap and hold the picture to save it.



eLearning 2015-2016

Families Without Internet



The Media Center at your child's school will be open for three days after school, following an eLearning Day(s), to download assignments.

